

Multi-purpose Communication Network Wire Tracker

User Manual

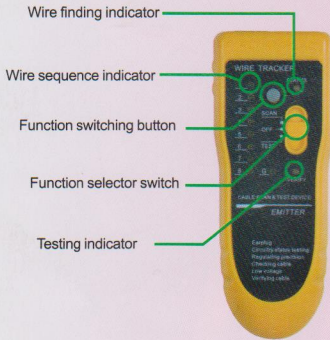
Wire Tracker



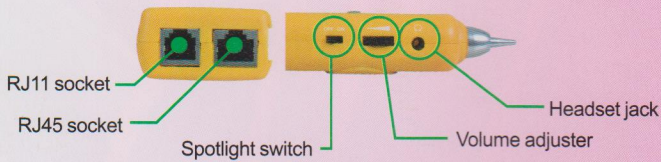
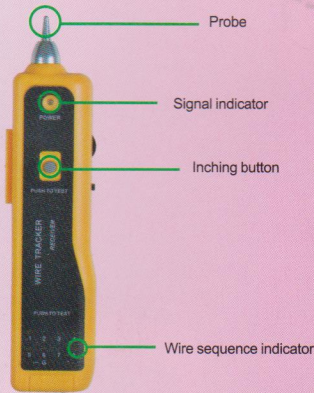
Wire Tracker

You may track the desired line with this device connected
with any model of Ethernet exchanger/router/PC terminal powered on.

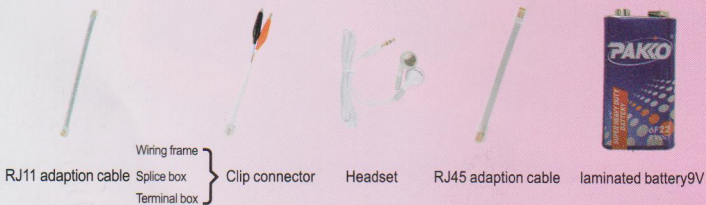
Parts of emitter



Parts of receiver



Accessories



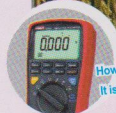
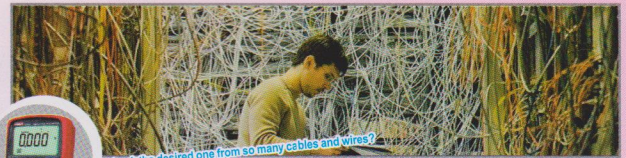
Wire Tracker

Electric Power Cable and Line Tracking Function



1. Connect the emitter and the metal wire to be found with an alligator clip.
2. Move the function selector function of the emitter to "SCAN", then the wire finding indicator "STATUS" will be on, indicating the normal work of the device.
3. Press down the inching button of the receiver and use the probe of the receiver to check the necessary target cable.

Among the numerous wires and cables, quickly track the desired one.



How to track the desired one from so many cables and wires?
It is very slow with a multimeter.

Note: Do not use this device on any line with strong electricity.



Connect the emitter with the end of the wire to be tracked.



No electrical drill any more!

Compare the strength of the sound of "beep, beep" and the signal indicator brightness; the line with the strongest "beep, beep" and the brightest indicator is the target line.

Wire Tracker

Network Line Verification Function

1. Insert the RJ45 plugs on both ends of the network cable into the corresponding port of the emitter and the receiver.
2. Move the function selector switch of the emitter to "TEST", then the testing indicator "VERIFY" will be on, indicating that the emitter works normally.
3. According to the 18 wire sequence indicators, determine such characteristics as short circuit, broken circuit, open circuit, crossing and so on.



Network Cable Sequence Verification

This device supports the direct verification of cable sequence when the exchanger is switched on.

No network tester is needed any more for wiring outside, very convenient!

May replace network tester.

With the 18 wire sequence indicators, determine such characteristics as short circuit, broken circuit, open circuit, crossing and so on, with accurate result and clear and intuitive readings.

With the automatic scanning, can quickly test the cables; can test piece by piece (pair by pair) the twisted pairs 1, 2, 3, 4, 5, 6, 7, 8, and G cable, and may determine which piece (pair) is in bad order, short circuit, open circuit, etc..

Note: Do not use this device on any line with strong electricity.



Wire Tracker

Network Line Verification Function

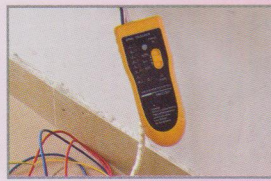


1. Directly insert the phone cable with modular plug into the RJ11 port of the phone cable port.
2. Move the function selector function of the emitter to "SCAN", then the wire finding indicator "STATUS" will be on, indicating the normal work of the device.
3. Press down the inching button of the receiver and use the probe of the receiver to check the necessary target cable.

Among the numerous wires and cables, quickly track the desired one.

Case 1

Track on the wiring frame



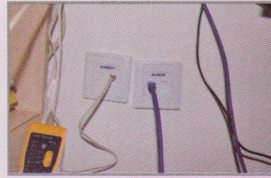
Connect the emitter with the port of the phone cable to be tracked.



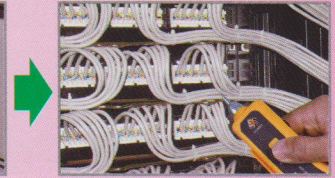
Use the receiver to track the target cable on the other end.

Case 2

Track on the exchanger



Connect the emitter with the port of the phone cable to be tracked.



Use the receiver to track the target cable on the other end.

Compare the strength of the sound of "beep, beep" and the signal indicator brightness; the line with the strongest "beep, beep" and the brightest indicator is the target line.

Wire Tracker

NetworkLine Wire Tracking Function

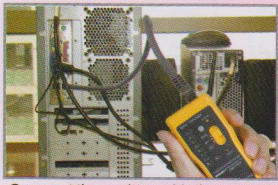


1. Directly insert the phone cable with modular plug into the RJ11 port of the phone cable port.
2. Move the function selector function of the emitter to "SCAN", then the wire finding indicator "STATUS" will be on, indicating the normal work of the device.
3. Press down the inching button of the receiver and use the probe of the receiver to check the necessary target cable.

Among the numerous wires and cables, quickly track the desired one.

Case 1

Track in an Internet bar



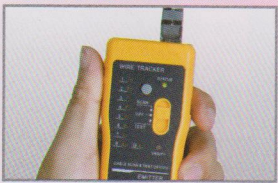
Connect the emitter with the port of the network cable to be tracked.



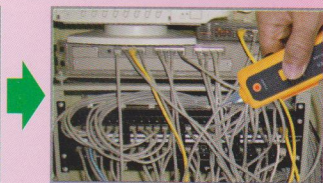
Track the target cable on the exchanger.

Case 2

Track on a router



Connect the emitter with the port of the network cable to be tracked.



Use the receiver to track the target cable on the other end.

Compare the strength of the sound of "beep, beep" and the signal indicator brightness; the line with the strongest "beep, beep" and the brightest indicator is the target line.

Wire Tracker

Other Functions

Open Circuit and Short Circuit Test

Move the function selector switch of the emitter to the "TEST" position, press the function switching button of the emitter for 2s, in such case, the VERIFY indicator will change from flashing to normally on, insert the modular plug with alligator clip into the RJ11 port; respectively clamp the two ends of the cable to be tracked with two clips. If short circuit, the "1" indicator of the emitter will be on; if not short circuit, not on. The resistance on the line may be indicated with the brightness of the status indicator: the brightest the indicator, the smallest the resistance; or the darkest the indicator, the largest the resistance.

DC Level Testing Function

Move the function selector switch of the emitter to the "SCAN" position, press the function switching button of the emitter for 2s, in such case, the STATUS indicator will be off and the VERIFY indicator will be on, insert the modular plug with alligator clip into the RJ11 port; respectively clamp the two ends of the cable to be tracked with two clips. If the STATUS indicator is red, the pole clamped by the red clip is positive; if the STATUS indicator is green, the pole clamped by the red clip is negative. The level may be indicated with the brightness of the status indicator: the brightest the indicator, the highest the level; or the darkest the indicator, the lowest the level.



The DC level positive and negative pole can be tested.

Low Voltage Hinting Function

Move the function selector switch of the emitter to the "SCAN" position, when the cell voltage is below 6.0V, the STATUS indicator and the VERIFY indicator of the emitter can flash at the same time.

Headset Function

In a noisy environment, you may put on your headset to operate the device to avoid external interference.



Illuminating Lamp Function

At night or in a dark environment, you may move the illuminating lamp switch, then the lamp will be on; if it is convenient for your work, you may lock the inching button.



Volume Adjustment Function

In Wire tracking, you may turn the volume knob on the receiver until the volume becomes proper.

Energy-saving

Light-touch switch, automatic switch off in automatic time delay; the continuous service life of the cell is above 50h.

Wire Tracker



Customers:

Telecom office/Internet bar/
Telecom engineering company/
Network engineering company/
Electric power/Army and others
needing metal lines.

Applicable Scope:

Telecom network line engineering
and routine servicing; computer
network line maintenance; other
metal wire line engineering and
maintenance.

Product Specifications:

Items	Specs
Product name	Multi-purpose communication network wire tracker
Power specs	DC, 9V laminated battery
Max. operating current	Emitter $\leq 10\text{mA}$
	Receiver $\leq 30\text{mA}$
Signal transmission format	Multi-frequency pulse
Signal output level	8Vp-p
Signal transmission distance	$\geq 3\text{km}$

Packing List:

1. Emitter	1 set	6. Alligator clip adapter	1 pc
2. Receiver	1 set	7. RJ45 adapter	1 pc
3. 9V laminated battery		8. User Manual	1 pc
4. Earphone	1 pc	9. Toolkit	1 pc
5. RJ11 adapter	1 pc	10. Color box	1 pc