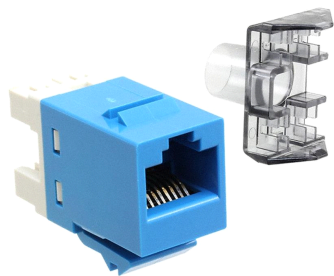


SL110 Series Modular Jack, RJ45, category 6, T568A/T568B, unshielded, without dust cover, blue



## Product Classification

<b>Portfolio</b>	NETCONNECT®
<b>Product Series</b>	SL Series
<b>Product Type</b>	Modular jack
<b>Regional Availability</b>	Asia   Australia/New Zealand   EMEA   Latin America

## Dimensions

<b>Compatible Insulated Conductor Diameter, maximum</b>	1.450 mm   0.057 in
<b>Depth</b>	30.48 mm   1.20 in
<b>Height</b>	16.13 mm   0.64 in
<b>Width</b>	14.48 mm   0.57 in

## Electrical Specifications

<b>ANSI/TIA Category</b>	6
<b>Safety Voltage Rating</b>	150 Vac
<b>Transmission Standard</b>	ANSI/TIA-568-C.2   ISO/IEC 11801 Class E

## Environmental Specifications

<b>Flammability Rating</b>	UL 94 V-0
<b>Operating Temperature</b>	-40 °C to +70 °C (-40 °F to +158 °F)
<b>Safety Standard</b>	CSA   cUL

## General Specifications

<b>Cable Type</b>	Unshielded
<b>Color</b>	Blue
<b>Includes</b>	Strain relief cap
<b>Mount Type</b>	SL Series faceplates and panels
<b>Package Quantity</b>	1
<b>Packaging Type</b>	Bag

<b>Panel Cutout, recommended</b>	14.78 x 20.07 mm (0.58 x 0.79 in)
<b>Panel Thickness, recommended</b>	1.60 mm

## Mechanical Specifications

<b>Conductor Gauge, solid</b>	24–22 AWG
<b>Conductor Gauge, stranded</b>	26–24 AWG
<b>Conductor Type</b>	Solid   Stranded
<b>Contact Base Material</b>	Beryllium copper
<b>Contact Plating Material</b>	Gold
<b>Contact Plating Thickness</b>	1.27 µm
<b>Material Type</b>	Polycarbonate
<b>Outlet Feature</b>	Inverted jack face
<b>Outlet Type</b>	Standard
<b>Plug Insertion Life, minimum</b>	750 times
<b>Plug Retention Force, minimum</b>	89 N   20 lbf
<b>Termination Punchdowns, minimum</b>	200 times
<b>Termination Tool</b>	SL Termination tool
<b>Termination Type</b>	IDC
<b>Wiring</b>	T568A   T568B

## Regulatory Compliance/Certifications

<b>Agency</b>	<b>Classification</b>
RoHS 2011/65/EU	Compliant
RCM	Compliant to electrical safety, EMC, EME & telecommunications requirements

